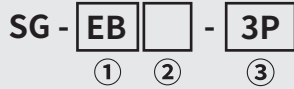


Earth Bar

RoHS

Nomenclature



- ① **Product name**
Earth Bar
- ② **Type**
-: Single file
2: Double file bending type
3: Double file straight type
- ③ **The number of terminals**
3P ~ 30P

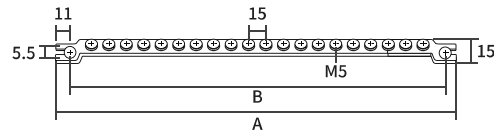


※ RoHS Laser marking

SG - EB



Plated



Description

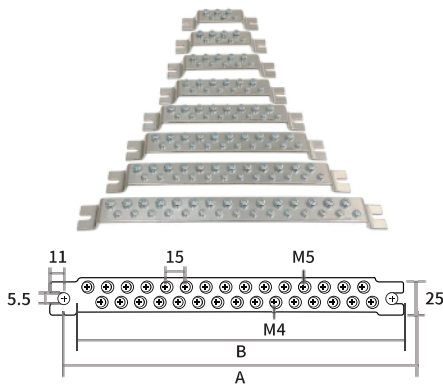
Earth bars are non-plated products made of 99.9% copper, and can be divided into various types: single file, double file, 3P to 30P. They are manufactured to support the safe grounding of electric facilities.

Product Specifications

Tolerance: ±1mm
 Material: Copper 99.9%, Tin-plated
 Bolt size: M5 (Single-file) / M4, M5 (Double-file)

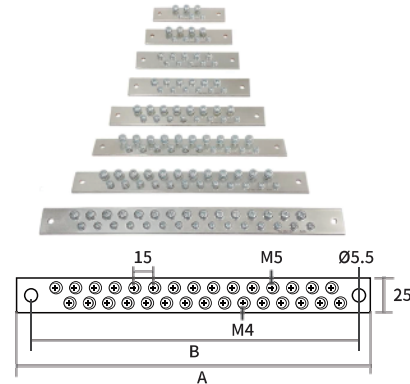
Model	Size(mm)			Weight(g)
	A	B	Width t	
SG-EB-3P	92	75	15 3	435
SG-EB-4P	107	90		505
SG-EB-5P	122	105		595
SG-EB-6P	137	120		675
SG-EB-7P	152	135		760
SG-EB-8P	167	150		830
SG-EB-10P	197	180		970
SG-EB-12P	227	210		1120
SG-EB-15P	272	255		1360
SG-EB-20P	347	330		1760

SG - EB2



Model	Size(mm)			Weight(g)
	A	B	Width t	
SG-EB2-6P	99	82	25 3	810
SG-EB2-8P	114	97		930
SG-EB2-10P	129	112		1070
SG-EB2-12P	144	127		1190
SG-EB2-16P	174	157		1440
SG-EB2-20P	204	187		1720
SG-EB2-24P	234	217		1950
SG-EB2-30P	279	262		2350

SG - EB3



Model	Size(mm)			Weight(g)
	A	B	Width t	
SG-EB3-6P	99	82	25 3	720
SG-EB3-8P	114	97		860
SG-EB3-10P	129	112		990
SG-EB3-12P	144	127		1090
SG-EB3-16P	174	157		1380
SG-EB3-20P	204	187		1630
SG-EB3-24P	234	217		1890
SG-EB3-30P	279	262		2290

Terminal Block

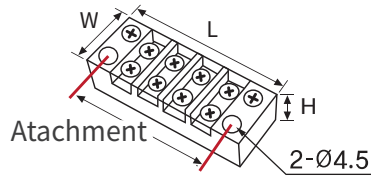
RoHS

Nomenclature

SG - **TB** - **1502**

① ②

- ① **Product name**
Terminal Block
- ② **Current / Number of pins**
15A / 02 - 10 Pin



Product Specifications

Tolerance: $\pm 1\text{mm}$
 Color : Black
 Operating temperature : $-20 \sim 70^{\circ}\text{C}$
 Rated voltage : 250V / Allowable current : 15A
 Material : PC

Model	Size(mm)			Attachment
	Length	Width	Height	
SG-TB-1502	38	20	14	28
SG-TB-1503	48			38
SG-TB-1504	57			48
SG-TB-1506	77			67
SG-TB-1510	117			107

Fixed Bracket

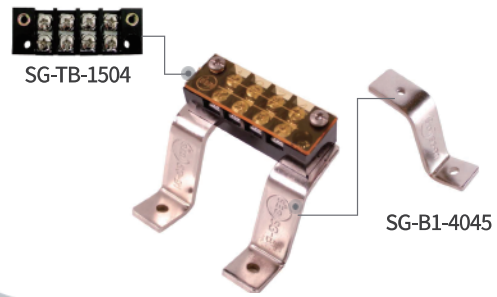
RoHS

Description

It is designed to relieve inconvenience by using it when taking out a terminal on the panel plate.

Product Specifications

Tolerance: $\pm 1\text{mm}$
 Color : Silver
 Material : Steel

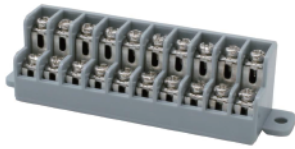


Size (mm)					
SG-B1-4045	SG-B1-4090	SG-B2-6045	SG-B2-6090	SG-B3-4045	SG-B3-4090

- ※ SG-B3-4045 : Only fixed terminal 100A or higher products are available
- ※ Width : B1, B2 - 17mm / B3 - 22mm / Thickness : 3t

DC Terminal Block

RoHS



Product Specifications

Tolerance: $\pm 1\text{mm}$
 Color: Gray
 Operating temperature : $-20 \sim 70^{\circ}\text{C}$
 Rated voltage : AC250V / Allowable current : 10A

HC Terminal Block

(Heat-resistant terminal block)

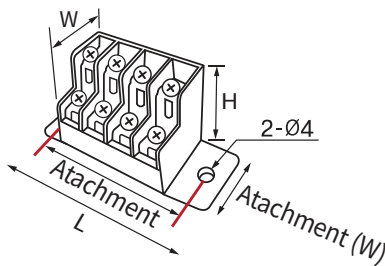


Product Specifications

Tolerance: $\pm 1\text{mm}$
 Color: Ivory
 Operating temperature : $-20 \sim 400^{\circ}\text{C}$
 Rated voltage : AC250V / Allowable current : 10A

Description

It is used to organize, connect power wires inside the PCB substrate electrical channels.



Model	Size(mm)					
	Length	Width	Height	Attachment Width	Attachment	Weight(g)
SG-DC(HC)-4P	51	22	27	14	42	23
SG-DC(HC)-6P	67		26	14	58	33
SG-DC(HC)-10P	99		26	14	91	53
SG-DC(HC)-15P	150		26	22	138	78
SG-DC(HC)-20P	192		31	22	180	109
SG-DC(HC)-25P	232		31	22	220	134

Din Rail

RoHS

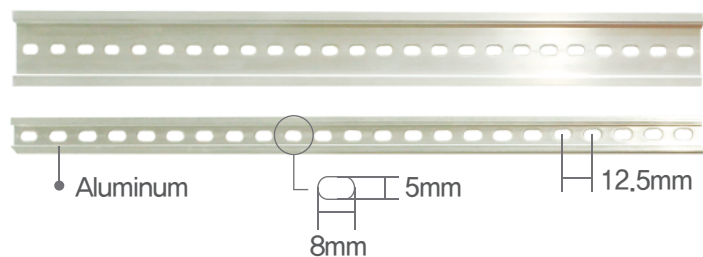
Nomenclature

SG - DR - 35

① ②

① Product name
Din Rail

② Width
15 : 15mm
35 : 35mm



※ ER-15 / 35 Hole size and spacing are the same

Product Specifications

Tolerance: $\pm 1\text{mm}$
 Color : Silver (anodizing)
 Material: Aluminum

Model	Size (mm)	
	Width	Length
SG-DR-15	15	1000
SG-DR-35	35	1000